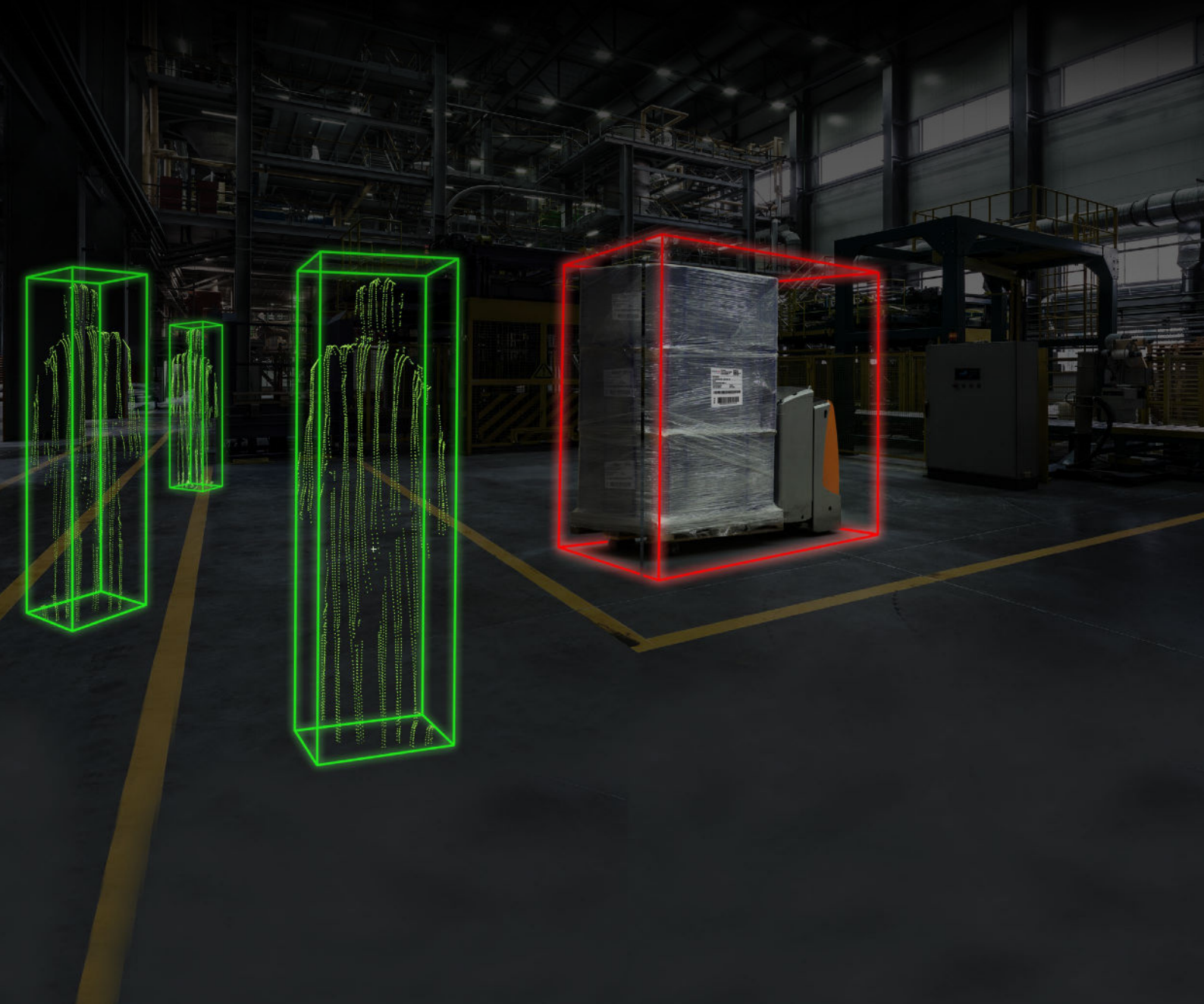




Leica BLK
Geosystems



LEICA BLK247 x5 & i5

SMART 3D SURVEILLANCE SYSTEM



LEICA BLK247 x5 & i5

SMART 3D SURVEILLANCE SYSTEM

	BLK247 x5	BLK247 i5
		
Usage	Indoor & Outdoor	Indoor
Housing colour	black	white
RGB Cameras	✓	✓
IR Cameras	✓	x
LiDAR	✓	✓

DESIGN & PHYSICAL

	BLK 247 x5	BLK247 i5
Housing	black powder coated aluminium	white powder coated aluminium
Weight	1460 g (3.218 lbs.)	1380 g (3.042 lbs.)
Device Height	189 mm (7.44 in.)	
Device Diameter	Bottom part: 140 mm (5.5 in.) Lighthouse: 80 mm (3.25 in)	

ELECTRICAL SPECIFICATION

Power supply	Power consumption: 51 W(max) Power supply options: Power over Ethernet (PoE + +); IEEE 802.3bt, Type 3, Class 6 Power supply over I/O port 48 V DC 1.06 A
Alarm output I/O Connector	Solid state relay Max. working voltage 40 V DC/AC Max. switch current at different working voltages: 5 V: max. 200 mA 12 V: max. 100 mA 24 V: max. 50mA

RGB IMAGING & VIDEO

Image sensor	2-camera system, RGB
Type	Fisheye lens
Single camera resolution	12 mega pixel
Field of view	360° x 180° (stitched image)
Stream resolution	1080p / 720p
Frame rate	10/15/20/25/30 fps

H264 profile	HIGH / MAIN / BASELINE
Image adjustment	Auto
Privacy masking	Black/white

LiDAR

Laser Class	Laser Class 1 (in accordance with IEC 60825-1)
Wavelength	830 nm
Field of View	360° x 270°
Range	30 m (98.4 ft.)
Point Measurement Rate	200,000 pts/s
Accuracy	6 - 10 mm (0.24 in. - 0.39 in.)

ENVIRONMENTAL

	BLK247 x5	BLK247 i5
IP rating	IP55/65/67	--
Operating temperature	-15° C to 40° C (5° F to 104°F)	10° C to 35° C (50° F to 95°F)
Storage temperature	-25° to 70° C (-13° to 158° F)	
Humidity	Max 95% non-condensing	
Working altitude	Unlimited	

IR IMAGING & VIDEO

Image sensor	4-camera system
Emmisivity	Adjustable
Single camera resolution	80 x 64 pixel
Field of view	360° x 136° (stitched image panorama) 88° x 70° (1 single image panorama)
Measurable temperature range	-20°C to 1000°C (-4° F to 1832° F)
Stream resolution	720 x 480
Frame Rate	2 fps

CONTROL CENTER FEATURES

- Recommended web browser: Google Chrome™
- General device settings
- Device status
- Definition of restricted areas
- Scheduling of restricted areas & feature activation
- Events list and download of event attachments